

# NRA Infratech



# INTRODUCTION



- ❑ It is our pleasure to Introduce ourselves as one of the leading General Contractors for Engineering, Civil, PEB, Industrial Construction, Infrastructure, etc.
- ❑ NRA Infratech founded in 2024 with a sole aim to be counted as one of the most professionally run service provider for the Construction needs & Steel Structure Manufacturer in India.
- ❑ NRA Infratech is capable to Design & Supply customized Workshops, Pre-Fabricated Welded Steel Structure for application such as Heavy Industries (like Cement Plant, Steel Industries, Sugar Industries etc.), Power Plant, Oil & Gas, Petrochemical Industries High Rise/Commercial Building, Bridge Girders, Airports and other Specialized Structure, etc.

# COMPANY PROFILE



- ❑ NRA Infratech the fast growing company in field of Design, Manufacturing, Supply & Erection of Pre-Engineering building & heavy structural steel. The company constitutes of professional having range of experience in PEB & Construction from more than 10 years in every field. We understand the importance of organized fabrication under strict quality and system controls.
- ❑ We are a quality driven company and ensure a well Designed & Manufactured Pre-Engineered Building is supplied with Excellent Quality and Fast Delivery.
- ❑ NRA Infratech employs the latest software like STAAD Pro, AutoCAD, Tekla etc., to deliver the most Innovative and best Solutions confirming to Engineering Standard and thereby adding value to the project from start to finish.

# VISION & MISSION



## **❑ Vision**

“Our vision is to be the Engineering Service Provider of choice, by developing a deep understanding of our customer’s needs & challenges, so we may work with them as an integrated partner to construct turnkey Infrastructure projects at most competitive prices as well as providing benefits to all its investors.”

## **❑ Mission**

Timely delivery of work orders. To cater to the needs of customers as per their variable and specified requirements. To manufacture and supply improvised products with enhanced competencies & thereby reduce cost year over year.

# WHAT WE OFFER ?



- ❑ Project Management Services.
- ❑ Pre-Engineered Steel Buildings (PEB)
- ❑ Light Gauge Frame Structures (LGFS)
- ❑ Engineering Consultancy including Design & Detailing
- ❑ All types of Civil Works
- ❑ Turnkey Project Works
- ❑ Tanks & Silos (Design, Fabrication and Erection)
- ❑ Infrastructure Projects (Railways, MES, Metros, Airports)

# WHY STRUCTURAL STEEL / PEB ?



- ☐ Durability – Earthquake & Weather Resistant.
- ☐ Value – Low Initial & Maintenance Cost.
- ☐ Environmental Friendly – All materials used can be Recycled.
- ☐ Flexible – Easy to Expand, Setup and Change.
- ☐ Faster – Reduce Construction Time.
- ☐ Aesthetics – Gives enough Flexibility to create Unique Structures.

# USES OF STRUCTURAL STEEL/PEB

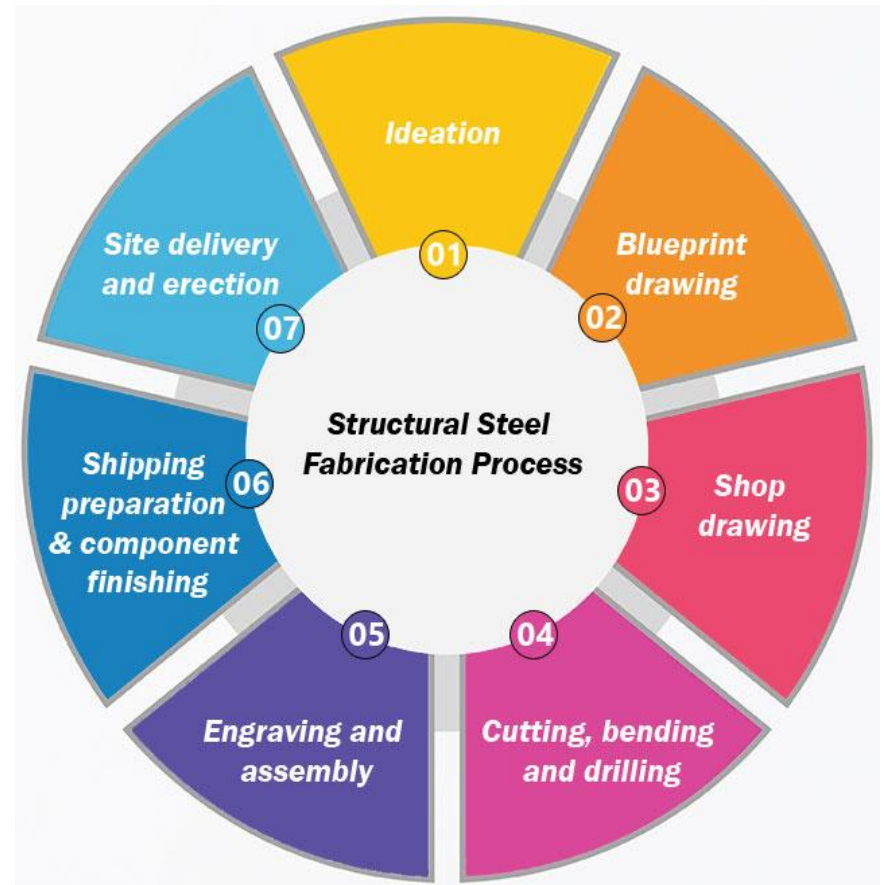
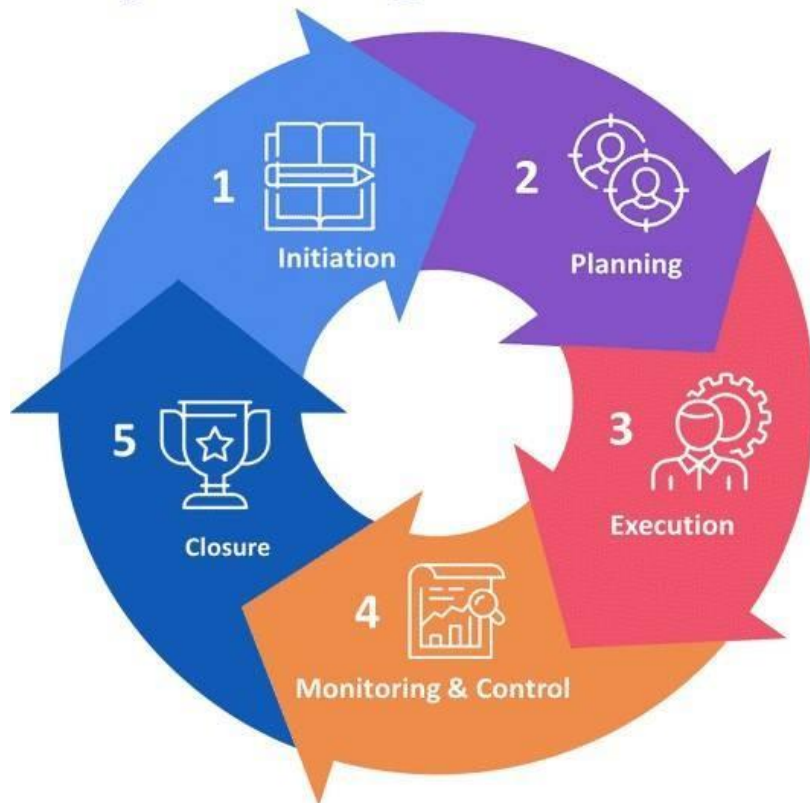


- ❑ Industrial Sheds / Workshops Sheds / Factory Sheds
- ❑ Warehouse Sheds / Godowns / Cold Storages
- ❑ Exhibition Halls / Auditoriums / Sports Complexes
- ❑ Showrooms / Service Stations / Distribution Centers
- ❑ Aircraft Hangers / Sugar Mills / Cement Industries
- ❑ Pump Stations / Poultry Farms / Greenhouse
- ❑ Multi-Level Parking / Data Centers / Bungalows
- ❑ Railway Stations / Airports / Foot Over Bridges



# CONSTRUCTION & ENGINEERING

## Project Management Process

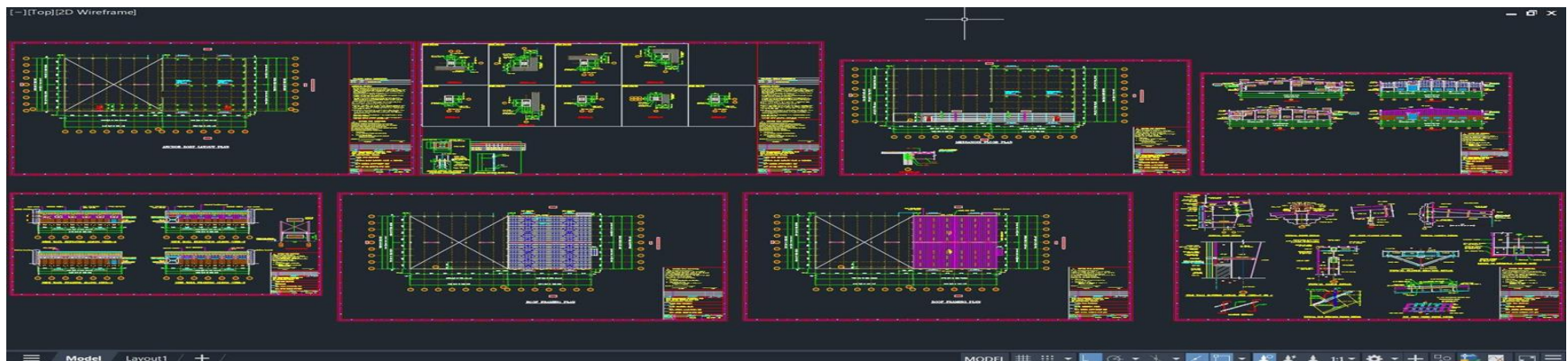
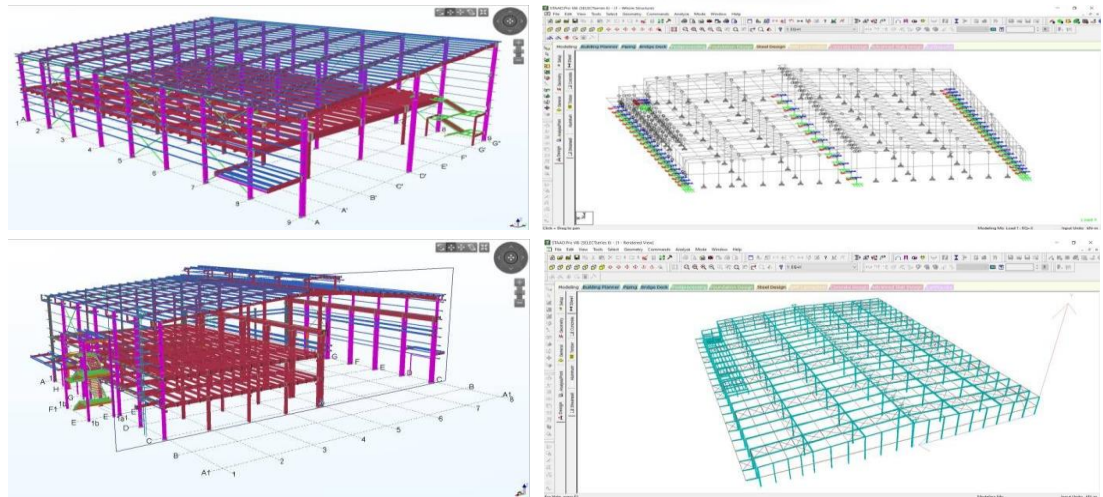




# DESIGN COMPETENCY

## ❑ Software for Design & Detailing

- STAAD PRO V8i
- AutoCAD
- TEKLA



# IN-HOUSE MACHINE LIST



Machine Details	Quantity
X-Y Plasma Cuttings Machine	1 Unit
Semi Automatic PUG Machine	2 Units
SAW Welding Machine	1 Unit
MIG Welding Machine	4 Units
ARC Welding Machine	6 Units
Broche Cutter	2 Units
Angle Grinders	7 Units
Shearing Machine	1 Unit
Hydraulic Power Press	1 Unit
Chop Saw Machine	2 Units

Machine Details	Quantity
Blasting Setup	1 Unit
Air Compressor	1 Unit
GAS Cutting Set / Torches	2 Unit
DG Set	1 Unit
Measuring Instruments	2 Lots
EOT Crane	5 MT
Threading Machine	1 Unit
Hydra Crane	1 Unit
Band Saw Machine	1 Unit
Dry Film Thickness (DFT)	2 Unit

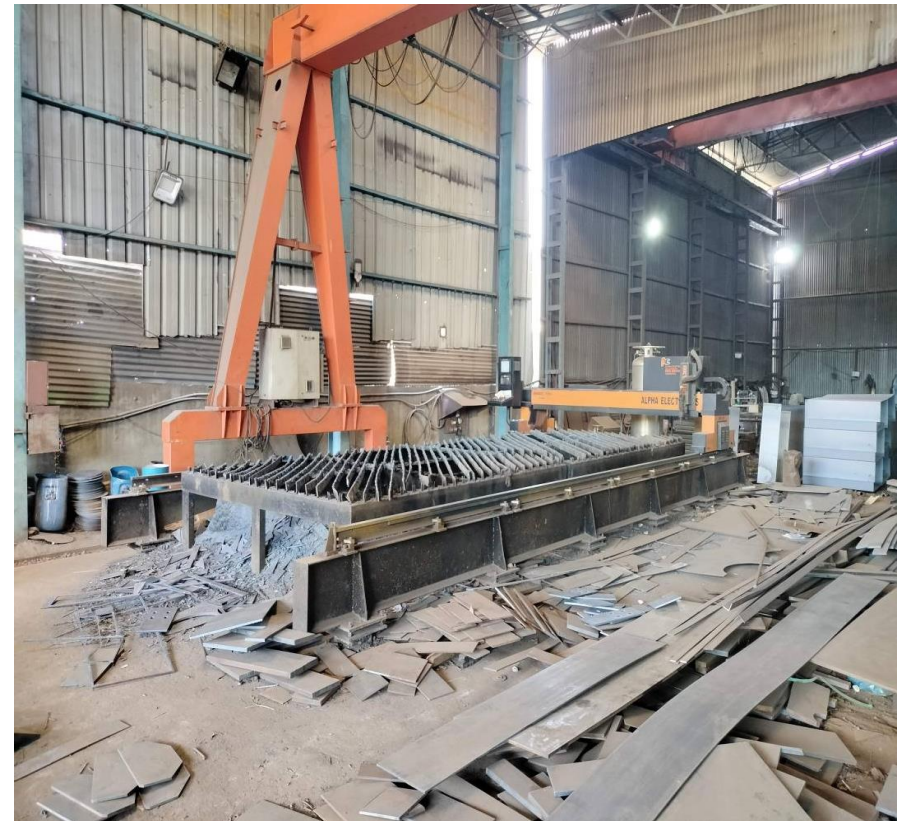
# MANUFACTURING FACILITY



## ❑ **Plant and machinery**

- Covered Area - 25000 Sq. ft.
- Total Area - 40000 Sq. ft.
- Power – 107 HP (Equal Genset)
- Production Capacity:
- Built-Up Sections - 600 MT/Month
- Sheets & Purlins - 800 MT/Month

## ❑ **Plasma Cutting Machine**





# MANUFACTURING FACILITY



## **Submerged Arc Welding Machine (SAW)**



# MANUFACTURING FACILITY





# MANUFACTURING FACILITY





# EXECUTED PROJECTS



# EXECUTED PROJECTS





# EXECUTED PROJECTS



# EXECUTED PROJECTS





# CLIENTELE



Client Name	Location	Scope	Area (Sqm)
Pennar Industries Limited	Hyderabad, TS	Erection	15000
SDRPL	Satara, MH	Supply & Erection	1000
Surabhi Iconica	Pune, MH	Supply & Erection	1000
Mapei Construction Ltd.	Vadodara, GUJ	Erection	8500
Aquanox Pumps Ltd. (Shakti)	Indore, MP	Erection	8000
Freight Systems Ltd. (FSL)	Ahmedabad, GUJ	Erection	9000
Nikitha Buildtech (Hyundai Project)	Pune, MH	Supply & Erection	1500
Rucha Engineers Pvt. Ltd.	Pune, MH	Supply & Erection	2000
Giant Engineering	Pune, MH	Supply & Erection	2500
Interarch Building Products	Noida, UP	Erection	9000
Shubham Infratech (Blue Star)	Mumbai, MH	Supply & Erection	6500
Anuradha Reality Pvt. Ltd.	Rajkot, GUJ	Supply & Erection	6500
Setco Automotive Ltd.	Vadodara, GUJ	Supply & Erection	3500

# CONTACT US



## ☐ Production Unit (PUNE)

- ☐ Gat No. 45/3, Chimbli Phata, Chakan Road, Pune – 412105, Maharashtra.

## ☐ Registered Office (PUNE)

- ☐ Gat No. 45/3, Chimbli Phata, Chakan Road, Pune – 412105, Maharashtra.

## ☐ Contact Details

- ☐ 9175083301, 7666987208
- ☐ [amit@nrainfratech.com](mailto:amit@nrainfratech.com) / [nrainfratech@gmail.com](mailto:nrainfratech@gmail.com)

## ☐ Website

- ☐ [www.nrainfratech.com](http://www.nrainfratech.com)